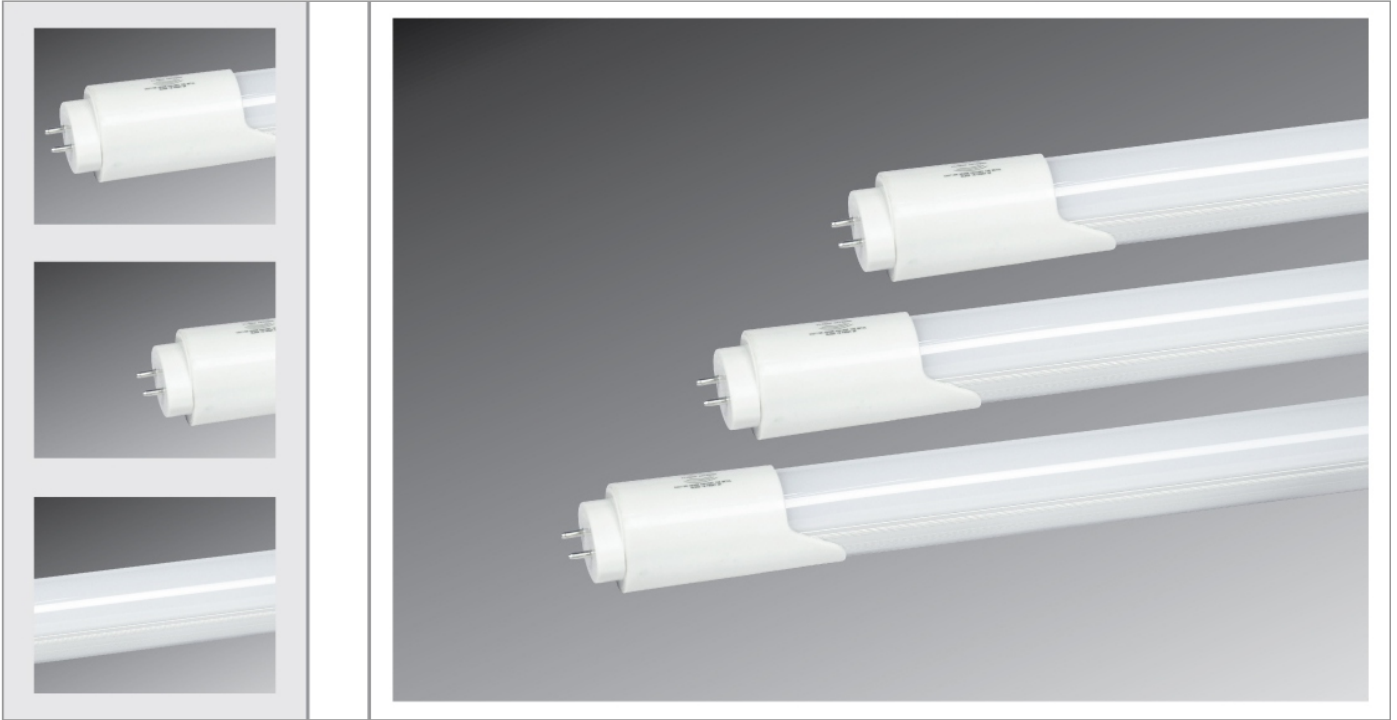




A-LED Smart Light

LED Radar Sensor Tube



产品型号 Model No	产品尺寸 Dimension(mm)	功率 Power(w)	灯珠数量 LED Qt'y	电压 Input Vol(v)	堵头 Base	色温 Color Temperature	流明值 LM	显色指数 CRI
AST-R12	L:1200 Φ26	12.5	192PCS	185V-265V 50/60Hz	G13	2700K-6500K	230-980lm	≥75
AST-R16		16	240PCS				230-1200lm	
AST-R18		18	288PCS				230-1460lm	

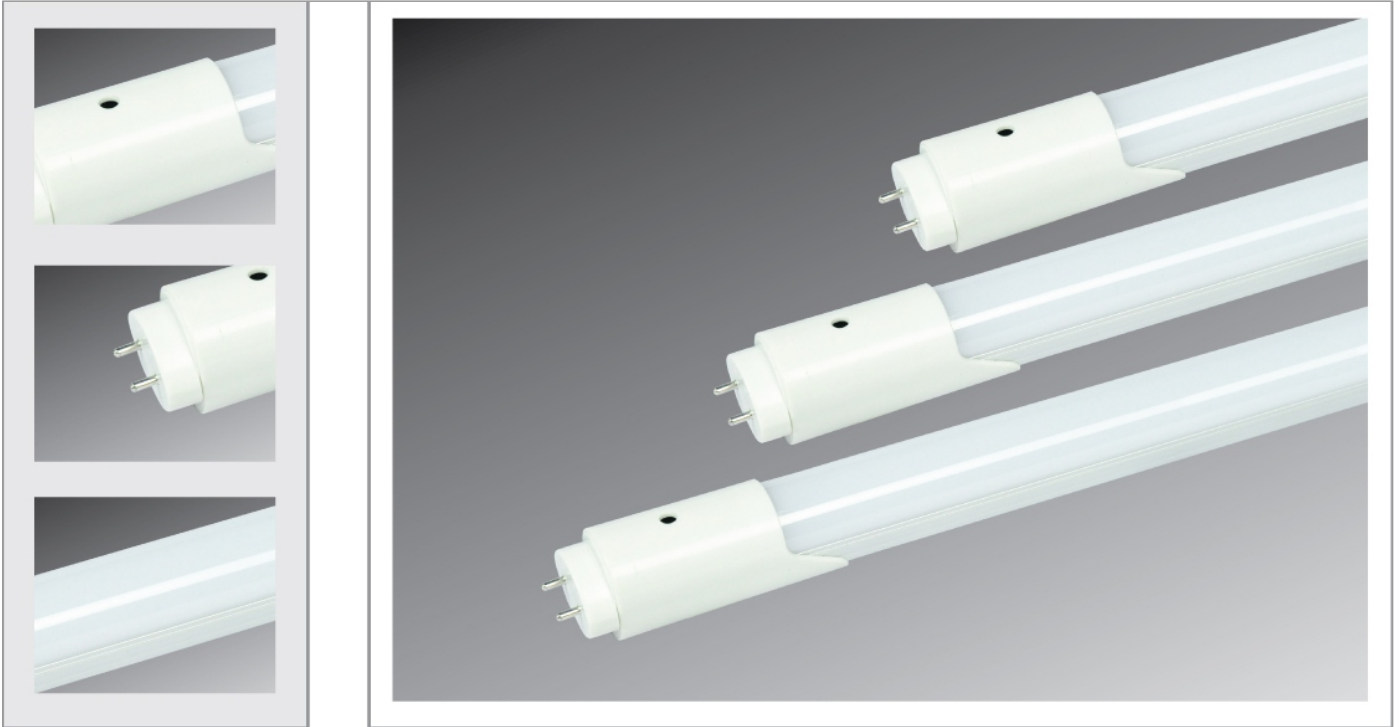
Features

- ▶ 利用多普勒效应原理，自主研发平面天线发射接收电路，智能检测周围电磁环境，自动调整工作状态
- ▶ 静止时超低照明功耗，一般为2-2.5W（根据环境可调）
- ▶ 人体或汽车移动进入时，自动感应，满负荷工作（10-8W）
- ▶ 满载工作时间：2秒-60秒根据环境可调
- ▶ 宽电压输入，恒流精度2%，感应灵敏度：1-9米
- ▶ 适用于地下停车场，商场，楼梯等长照明场所
- ▶ 过压，短路，开路保护
- ▶ 与红外线产品比较：雷达开关感应距离更远，角度广，无死区，能穿透玻璃，和薄木板，根据功率不同，可以穿透不同厚度的墙壁，不受环境，温度，灰尘等影响，在37度情况下，感应距离不会缩短
- ▶ Adapting Doppler Effect theory, we developed planar antennas transmitting and receiving circuit, detecting the surrounding electromagnetic environment intelligently and adjusting the working status automatically.
- ▶ Low power consumption on standby mode (2-2.5w, which is adjustable).
- ▶ When detected moving people or car, it will light up to full brightness(10-18W).
- ▶ Full brightness last time can be set to 2s-60s.
- ▶ Wide voltage input, constant current. Sensor distance: 1-9m.
- ▶ Best choice for underground parking, shopping mall, foot stage.
- ▶ Over load, short circuit, open circuit protection.



A-LED Smart Light

LED Sound Sensor Tube



产品型号 Model No	产品尺寸 Dimension(mm)	功率 Power(w)	灯珠数量 LED Qt'y	电压 Input Vol(v)	堵头 Base	色温 Color Temperature	流明值 LM	显色指数 CRI
AST-S12	L:1200 Φ26	12.5	192PCS	185V-265V 50/60Hz	G13	2700K-6500K	230-980lm	≥75
AST-S16		16	240PCS				230-1200lm	
AST-S18		18	288PCS				230-1460lm	

Features

- ▶ 自主研发专用CPU控制，智能检测周围环境，自动调整工作状态
- ▶ 静止时超低照明功耗，一般为2-2.5W（根据环境可调）
- ▶ 汽车移动进入时，自动感应，满负荷工作,10-8W(0.6或1.2米灯具)
- ▶ 满载工作时间：2秒-60秒根据环境可调
- ▶ 动作感应灵敏度：55dB
- ▶ 适用于地下停车场，商场，楼梯等长照明场所
- ▶ 宽电压输入，恒流精度2%,过压，短路，开路保护
- ▶ Self developed CPU, detecting the surrounding electromagnetic environment intelligently and adjusting the working status automatically.
- ▶ Low power consumption on standby mode (2-2.5w, which is adjustable).
- ▶ When detected moving people or car, it will light up to full brightness(10-18W).
- ▶ Full brightness last time can be set to 2s-60s.
- ▶ Wide voltage input, constant current. Sensor distance: 1-9m.
- ▶ Best choive for underground parking, shopping mall, foot stage.
- ▶ Over load, short circuit, open circuit protection.